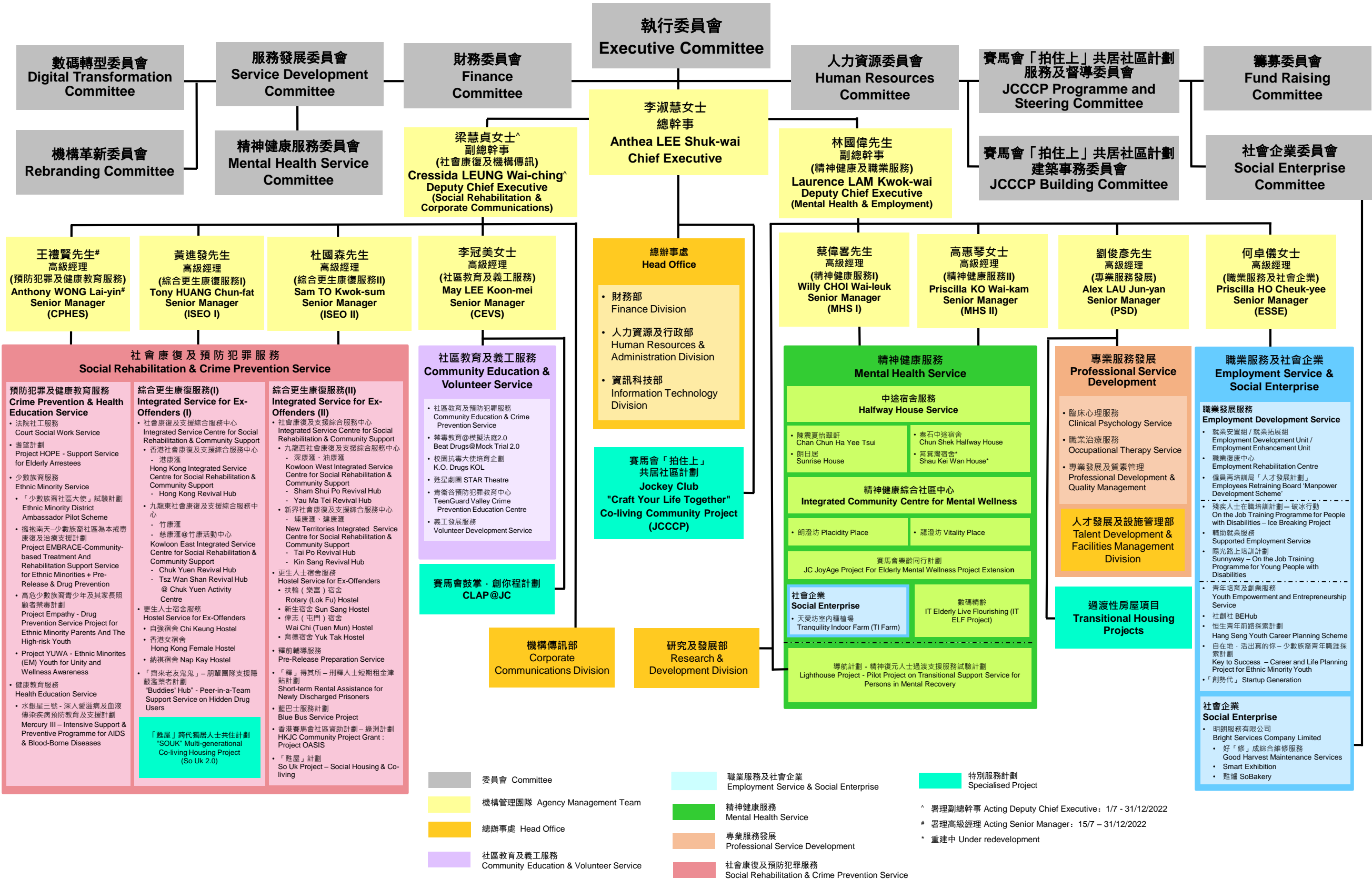


香港善導會

The Society of Rehabilitation and Crime Prevention, Hong Kong

組織架構 Organisation Chart

(Effective 1 September 2022)



社會康復及預防犯罪服務

Social Rehabilitation & Crime Prevention Service

預防犯罪及健康教育服務

Crime Prevention & Health Education Service

- 法院社工服務
Court Social Work Service
- 耆望計劃
Project HOPE - Support Service for Elderly Arrestees
- 少數族裔服務
Ethnic Minority Service
- 「少數族裔社區大使」試驗計劃
Ethnic Minority District Ambassador Pilot Scheme
- 擁抱南天—少數族裔社區為本戒毒康復及治療支援計劃
Project EMBRACE-Community-based Treatment And Rehabilitation Support Service for Ethnic Minorities + Pre-Release & Drug Prevention
- 高危少數族裔青少年及其家長照顧者禁毒計劃
Project Empathy - Drug Prevention Service Project for Ethnic Minority Parents And The High-risk Youth
- Project YUWA - Ethnic Minorities (EM) Youth for Unity and Wellness Awareness
- 健康教育服務
Health Education Service
- 水銀星三號 - 深入愛滋病及血液傳染疾病預防教育及支援計劃
Mercury III - Intensive Support & Preventive Programme for AIDS & Blood-Borne Diseases

綜合更生康復服務(I)

Integrated Service for Ex-Offenders (I)

- 社會康復及支援綜合服務中心
Integrated Service Centre for Social Rehabilitation & Community Support
- 香港社會康復及支援綜合服務中心 - 港康滙
Hong Kong Integrated Service Centre for Social Rehabilitation & Community Support
- 九龍東社會康復及支援綜合服務中心 - 竹康滙
Kowloon East Integrated Service Centre for Social Rehabilitation & Community Support
- Chuk Yuen Revival Hub
- Tsz Wan Shan Revival Hub
- Chuk Yuen Activity Centre
- 更生人士宿舍服務
Hostel Service for Ex-Offenders
- 扶輪(樂富)宿舍
Rotary (Lok Fu) Hostel
- 新生宿舍 Sun Sang Hostel
- 偉志(屯門)宿舍
Wai Chi (Tuen Mun) Hostel
- 育德宿舍 Yuk Tak Hostel
- 釋前輔導服務
Pre-Release Preparation Service
- 「釋」得其所 - 刑釋人士短期租金津貼計劃
Short-term Rental Assistance for Newly Discharged Prisoners
- 藍巴士服務計劃
Blue Bus Service Project
- 香港賽馬會社區資助計劃 - 綠洲計劃
HKJC Community Project Grant : Project OASIS
- 「甦屋」計劃
So Uk Project - Social Housing & Co-living

綜合更生康復服務(II)

Integrated Service for Ex-Offenders (II)

- 社會康復及支援綜合服務中心
Integrated Service Centre for Social Rehabilitation & Community Support
- 九龍西社會康復及支援綜合服務中心 - 深康滙、油康滙
Kowloon West Integrated Service Centre for Social Rehabilitation & Community Support
- Sham Shui Po Revival Hub
- Yau Ma Tei Revival Hub
- 新界社會康復及支援綜合服務中心 - 埔康滙、建康滙
New Territories Integrated Service Centre for Social Rehabilitation & Community Support
- Tai Po Revival Hub
- Kin Sang Revival Hub
- 更生人士宿舍服務
Hostel Service for Ex-Offenders
- 扶輪(樂富)宿舍
Rotary (Lok Fu) Hostel
- 新生宿舍 Sun Sang Hostel
- 偉志(屯門)宿舍
Wai Chi (Tuen Mun) Hostel
- 育德宿舍 Yuk Tak Hostel
- 釋前輔導服務
Pre-Release Preparation Service
- 「釋」得其所 - 刑釋人士短期租金津貼計劃
Short-term Rental Assistance for Newly Discharged Prisoners
- 藍巴士服務計劃
Blue Bus Service Project
- 香港賽馬會社區資助計劃 - 綠洲計劃
HKJC Community Project Grant : Project OASIS
- 「甦屋」計劃
So Uk Project - Social Housing & Co-living

社區教育及義工服務

Community Education & Volunteer Service

- 社區教育及預防犯罪服務
Community Education & Crime Prevention Service
- 禁毒教育@模擬法庭2.0
Beat Drugs@Mock Trial 2.0
- 校園抗毒大使培育企劃
K.O. Drugs KOL
- 魁星劇團 STAR Theatre
- 青衿預防犯罪教育中心
TeenGuard Valley Crime Prevention Education Centre
- 義工發展服務
Volunteer Development Service

賽馬會鼓掌·創你程計劃

CLAP@JC

機構傳訊部

Corporate Communications Division

研究及發展部

Research & Development Division

總辦事處

Head Office

- 財務部
Finance Division
- 人力資源及行政部
Human Resources & Administration Division
- 資訊科技部
Information Technology Division

賽馬會「拍住上」共居社區計劃

Jockey Club "Craft Your Life Together" Co-living Community Project (JCCCP)

精神健康服務

Mental Health Service

中途宿舍服務

Halfway House Service

- 陳震夏怡軒
Chan Chun Ha Yee Tsui
- 朗日居
Sunrise House
- 秦石中途宿舍
Chun Shek Halfway House
- 筲箕灣宿舍*
Shau Kei Wan House*

精神健康綜合社區中心

Integrated Community Centre for Mental Wellness

- 朗澄坊 Placidity Place
- 龍澄坊 Vitality Place

賽馬會樂齡同行計劃

JC JoyAge Project For Elderly Mental Wellness Project Extension

社會企業

Social Enterprise

- 天愛坊室內種植場
Tranquility Indoor Farm (TI Farm)

導航計劃 - 精神復元人士過渡支援服務試驗計劃

Lighthouse Project - Pilot Project on Transitional Support Service for Persons in Mental Recovery

數碼精齡

IT Elderly Live Flourishing (IT ELF Project)

專業服務發展

Professional Service Development

- 臨床心理服務
Clinical Psychology Service
- 職業治療服務
Occupational Therapy Service
- 專業發展及質素管理
Professional Development & Quality Management

人才發展及設施管理部

Talent Development & Facilities Management Division

過渡性房屋項目

Transitional Housing Projects

職業服務及社會企業

Employment Service & Social Enterprise

職業發展服務

Employment Development Service

- 就業安置組 / 就業拓展組
Employment Development Unit / Employment Enhancement Unit
- 職業康復中心
Employment Rehabilitation Centre
- 僱員再培訓局「人才發展計劃」
Employees Retraining Board 'Manpower Development Scheme'
- 殘疾人士在職培訓計劃 - 破冰行動
On the Job Training Programme for People with Disabilities - Ice Breaking Project
- 輔助就業服務
Supported Employment Service
- 陽光路上培訓計劃
Sunnyway - On the Job Training Programme for Young People with Disabilities
- 青年培育及創業服務
Youth Empowerment and Entrepreneurship Service
- 社創社 BEHub
- 恒生青年前路探索計劃
Hang Seng Youth Career Planning Scheme
- 自在地·活出真的你 - 少數族裔青年職涯探索計劃
Key to Success - Career and Life Planning Project for Ethnic Minority Youth
- 「創勢代」Startup Generation

社會企業

Social Enterprise

- 明朗服務有限公司
Bright Services Company Limited
- 好「修」成綜合維修服務
Good Harvest Maintenance Services
- Smart Exhibition
- 甦爐 SoBakery

- 委員會 Committee
- 機構管理團隊 Agency Management Team
- 總辦事處 Head Office
- 社區教育及義工服務
Community Education & Volunteer Service
- 職業服務及社會企業
Employment Service & Social Enterprise
- 特別服務計劃
Specialised Project
- 精神健康服務
Mental Health Service
- 專業服務發展
Professional Service Development
- 社會康復及預防犯罪服務
Social Rehabilitation & Crime Prevention Service

^ 署理副總幹事 Acting Deputy Chief Executive: 1/7 - 31/12/2022
 # 署理高級經理 Acting Senior Manager: 15/7 - 31/12/2022
 * 重建中 Under redevelopment